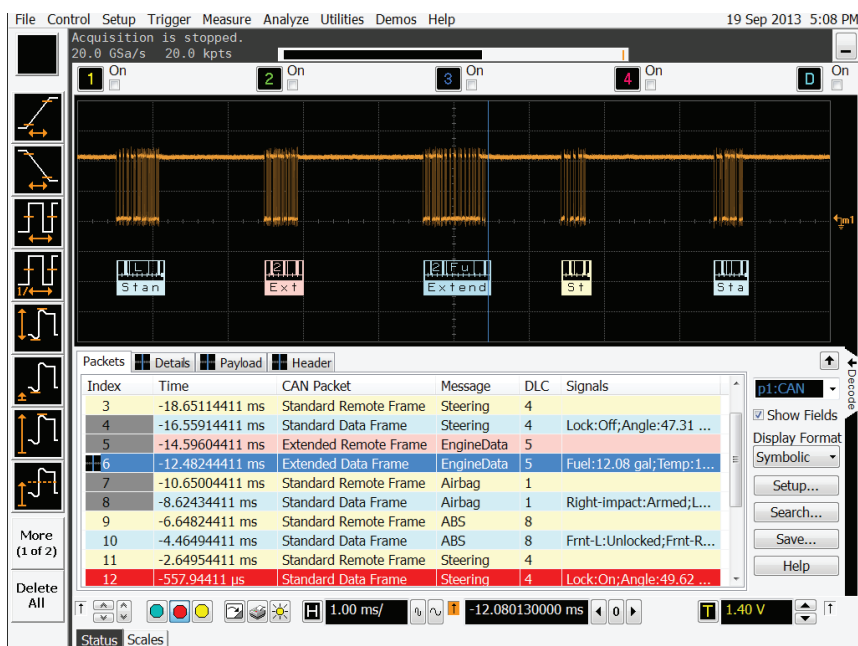


# Keysight Technologies

## CAN, LIN and FlexRay Protocol Triggering and Decode for Infiniium 90000 Series Oscilloscopes

Data Sheet



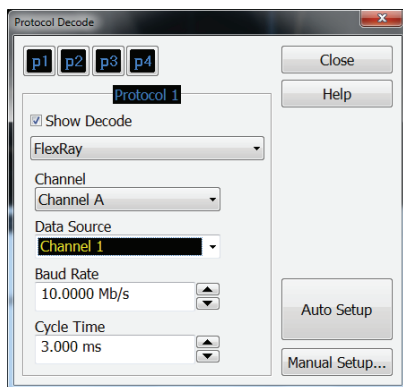
## This application is available in the following license variations.

- Order N8803A for a user-installed license
- Order option 008 for a factory-installed license with new 90000 Series oscilloscopes
- Order N5435A option 033 for a server-based license that works on both 9000 and 90000 Series oscilloscopes

## CAN, LIN and FlexRay serial buses

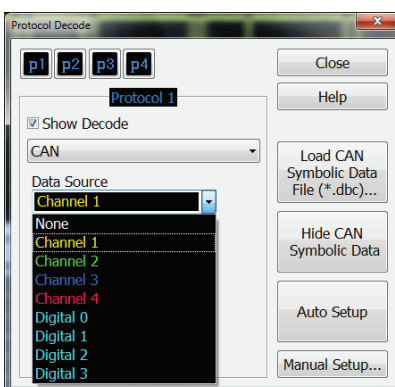
Keysight Technologies, Inc. oscilloscope automotive options help electronic system designers test and debug the physical layer of automotive serial buses faster. CAN, LIN and FlexRay serial buses are the backbone for communication among many separate controllers, sensors, actuators, and ECUs located throughout automotive and industrial designs. These serial bus interfaces provide content rich points for debug and test. However, since these protocols transfer bits serially, using a traditional oscilloscope has limitations. Manually converting captured 1's and 0's to protocol requires significant effort, can't be done in real-time, and includes potential for human error. Also, traditional oscilloscope triggers are not sufficient for specifying protocol-level conditions. Extend your oscilloscope capability with Keysight's CAN, LIN and FlexRay protocol triggering and decode application. This application makes it easy to debug and test designs that include these buses using your Infiniium oscilloscope.

- Set up your oscilloscope to show CAN, LIN or FlexRay protocol decode in less than 30 seconds.
- Get access to a rich set of integrated protocol-level software triggers.
- Save time and eliminate errors by viewing packets at the protocol level.
- Use time-correlated views to quickly troubleshoot serial protocol problems back to their timing or signal integrity root cause.
- With the CAN-dbc symbolic trigger and decode capability, engineers can now test the physical layer of this differential bus at a higher abstraction level.



### 30 second CAN, LIN or FlexRay Setup

Configure your oscilloscope to display protocol decode in under 30 seconds. Use "Auto Setup" to automatically configure sample rate, memory depth, threshold and trigger levels, and clock recovery for FlexRay.



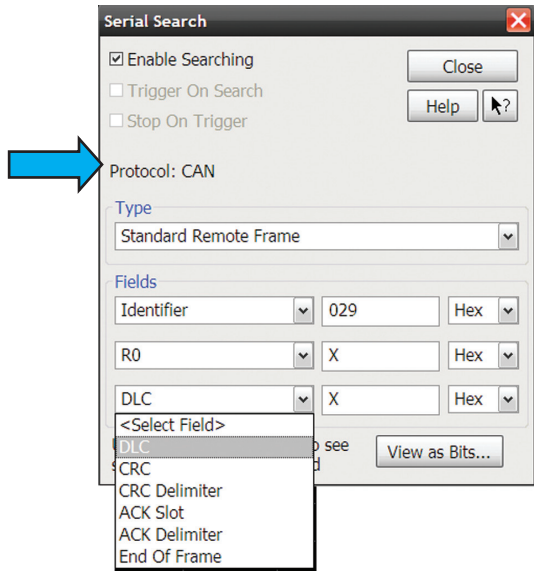
### Support for both analog and digital channels

Acquire serial buses using any combination of scope or digital channels. Using digital channels on MSO models preserves analog channels for viewing other time-correlated signals.

# CAN, LIN and FlexRay setup and protocol triggering

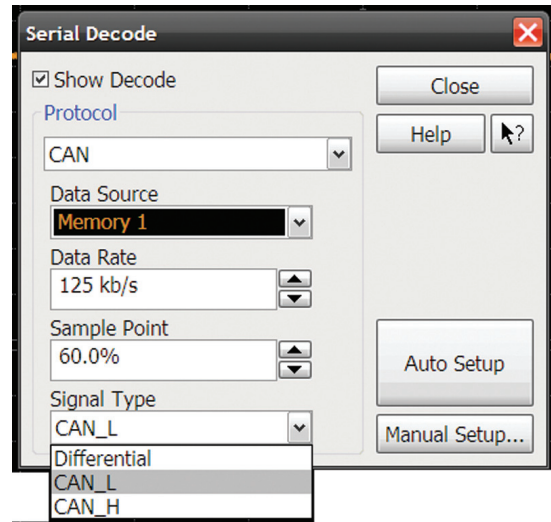
Get access to a rich set of integrated software protocol-level triggers. The application includes a suite of configurable protocol-level trigger conditions specific to CAN, LIN, and FlexRay. When serial triggering is selected, the application uses software-based triggering.

With software-based protocol triggering, the oscilloscope takes signals acquired using either scope or digital channels and reconstructs protocol frames after each acquisition. It then inspects these protocol frames against specified protocol-level trigger conditions and triggers when the condition is met.



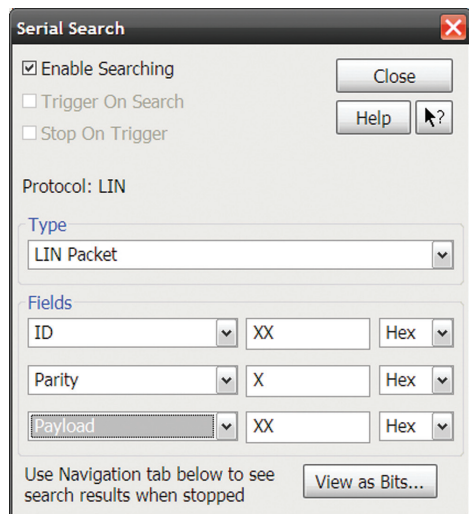
### CAN trigger

Quickly set up trigger for a unique frame or error condition.



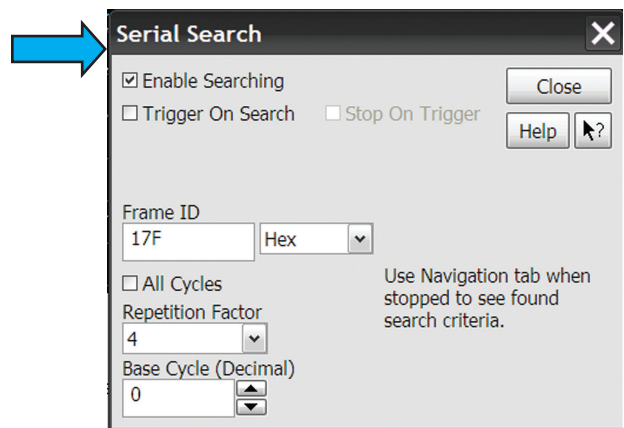
### Specify the CAN signal type.

Use single-ended probes or differential probes.



### LIN Trigger

For triggering on LIN packets, choose a combination of ID, parity, and payload values.



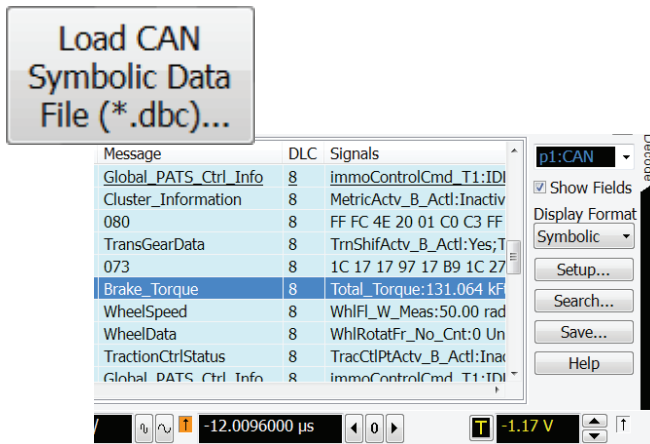
### FlexRay trigger

Quickly specify frame ID and repetition factor (optional) for software-based triggering and searching

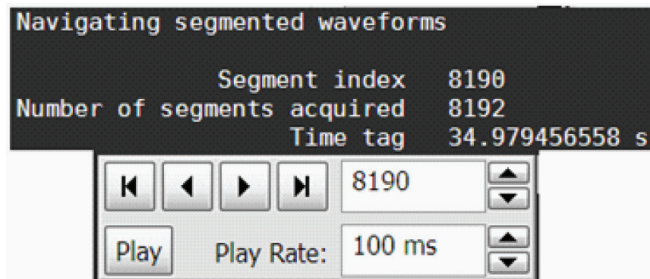
# CAN and CAN-dbc protocol decode



Quickly move between physical and CAN protocol layer information using the time-correlated tracing marker. Display protocol content using embedded decode in the waveform area. Or, see protocol events in a compact listing format. For CAN minor tick marks indicate clock transitions. Major tick marks indicate segments of the serial packet such as ID, DLC, CRC, CAN measurements are automatically time-correlated with measurement on other scope channels.



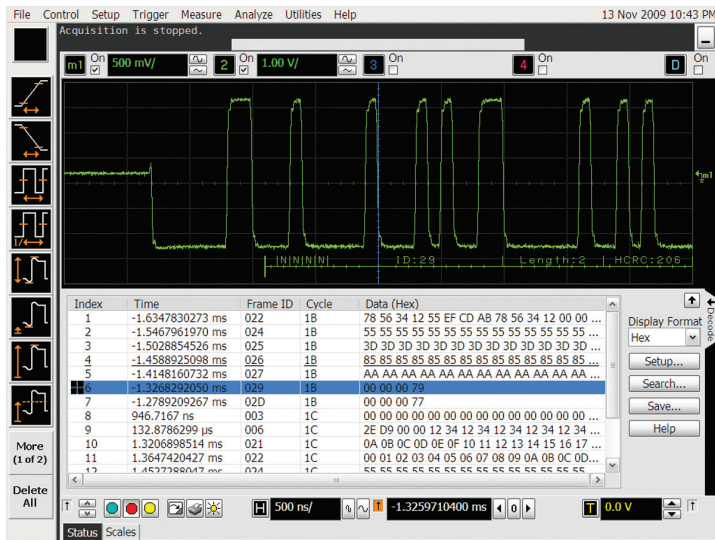
Import industry-standard .dbc files for symbolic triggering and decode. Message and signal values are displayed on the lister and in the waveform in symbolic format, making it easier to understand the oscilloscope capture.



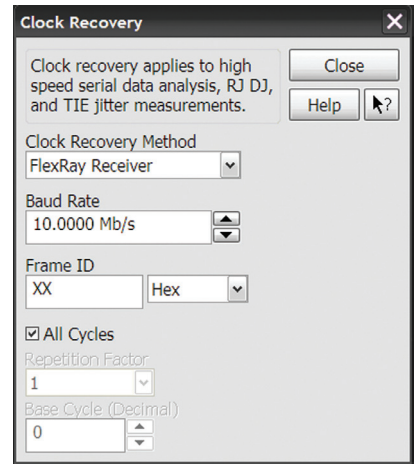
## Long time captures using segmented memory

In this example, CAN traffic was captured for near 35 seconds. Segmented memory uses time tags to track time between segment acquisitions.

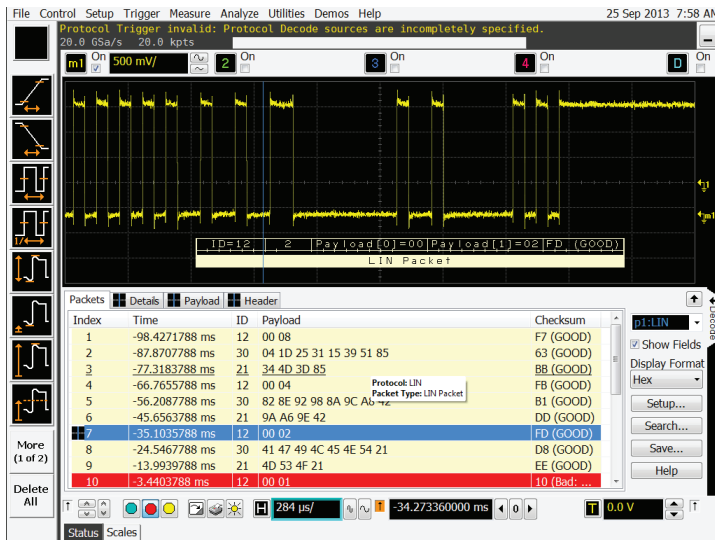
# FlexRay protocol decode



Quickly move between FlexRay physical and protocol layer information using the time-correlated tracing marker. Display protocol content using embedded decode in the waveform area. Or, see protocol events in a compact listing format. Minor tick marks indicate clock transitions. Major tick marks indicate segments of the serial packets.

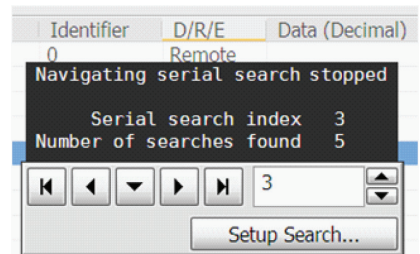


Solution includes FlexRay receiver clock recovery necessary for protocol decode and triggering.



## LIN decode embedded in waveform area

Utilize the oscilloscope waveform area to display decode information. Minor ticks indicate clock transitions, and major ticks show segments within each LIN packet.



## Post-acquisition searching

Search acquired protocol listings using a menu that is identical to the trigger menu. Quickly move to next occurrence of a specified event.

## CAN, LIN and FlexRay application specifications and characteristics

<b>CAN</b>	
CAN sources	Analog channels 1, 2, 3, or 4 Any waveform memories The application relies on probing and trigger/measurement thresholds to properly condition the signal for triggering and decode. Differential probing may be required.
Data rate	100 bp/s up to 1 Mb/s
Signal type	Differential (L-H), CAN_L, or CAN_H
Auto setup	Automatically configures scope settings for proper CAN decode and SW-based protocol triggering including memory depth, edge triggering, holdoff, sample rate, and measurement thresholds
Decoded fields	All including extended frame format
Triggering (software-based)	Start of frame Data frame (frame containing node data for transmission) user specified value for data byte 0 in hex, binary, or decimal Immediately followed by data byte specified in hex, binary, or decimal Remote frame (frame requesting the transmission of a specific identifier) User specified identifier in hex, binary, or decimal Data or remote frame Error frame (frame transmitted by any node detecting an error)
.dbc support	Import of industry-standard .dbc files for symbolic trigger and decode Maximum number of messages = 256

<b>LIN</b>	
LIN sources	Analog channels 1, 2, 3, or 4 Any waveform memories The application relies on probing and trigger/measurement thresholds to properly condition the signal for triggering and decode. Differential probing may be required
Data rate	2400 bp/s to 625 kb/s
Auto setup	Automatically configures scope settings for proper LIN decode and SW-based protocol triggering including memory depth, edge triggering, holdoff, sample rate, and measurement thresholds, and clock recovery.
Decoded fields	All. Supports LIN versions 1.3, 2.0, and 2.1
Triggering (software-based)	LIN packets, including user-specified values for ID, parity, and payload wakeup, or errors including: parity, check, sync, frame length, header length or wakeup

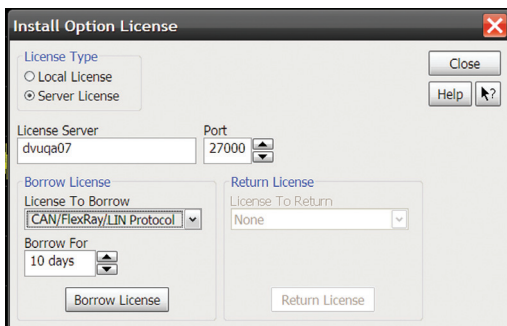


FlexRay	
FlexRay sources	Analog channels 1, 2, 3, or 4 Any waveform memories The application relies on probing and trigger/measurement thresholds to properly condition the signal for triggering and decode. Differential probing may be required.
Data rate	Up to 20 Mb/s
Cycle time	100 ns up to 100 ms
Auto setup	Automatically configures scope settings for proper FlexRay decode and SW-based protocol triggering including memory depth, edge triggering, holdoff, sample rate, and measurement thresholds, and clock recovery.
Decoded fields	All
Triggering (software-based)	Cycle TSS Any TSS User specified frame ID in hex, decimal, or binary, All cycles Repetition factor of 1, 2, 4, 8, 16, 32, or 64 Base cycle (decimal)

## Ordering Information

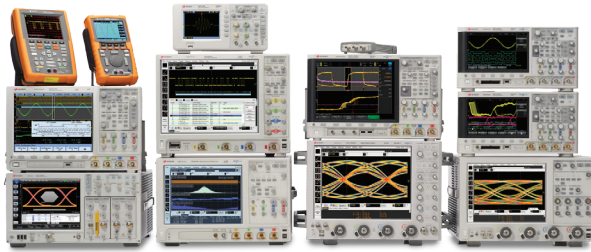
This application is compatible with all 90000 Series oscilloscope models.

Software applications	Factory-installed option for new scope purchases	User-installed stand-alone product number	Server-based license (N5435A option)
CAN, LIN, and FlexRay triggering and decode	008	N8803A	033



### Using multiple scopes?

Server-based licensing allows users to borrow an application for a specified period of time.



## Keysight Technologies Oscilloscopes

Multiple form factors from 20 MHz to > 90 GHz | Industry leading specs | Powerful applications

For more information on Keysight Technologies' products, applications or services, please contact your local Keysight office. The complete list is available at: [www.keysight.com/find/contactus](http://www.keysight.com/find/contactus)

### Americas

Canada	(877) 894 4414
Brazil	55 11 3351 7010
Mexico	001 800 254 2440
United States	(800) 829 4444

### Asia Pacific

Australia	1 800 629 485
China	800 810 0189
Hong Kong	800 938 693
India	1 800 112 929
Japan	0120 (421) 345
Korea	080 769 0800
Malaysia	1 800 888 848
Singapore	1 800 375 8100
Taiwan	0800 047 866
Other AP Countries	(65) 6375 8100

### Europe & Middle East

Austria	0800 001122
Belgium	0800 58580
Finland	0800 523252
France	0805 980333
Germany	0800 6270999
Ireland	1800 832700
Israel	1 809 343051
Italy	800 599100
Luxembourg	+32 800 58580
Netherlands	0800 0233200
Russia	8800 5009286
Spain	0800 000154
Sweden	0200 882255
Switzerland	0800 805353
	Opt. 1 (DE)
	Opt. 2 (FR)
	Opt. 3 (IT)
United Kingdom	0800 0260637

For other unlisted countries:  
[www.keysight.com/find/contactus](http://www.keysight.com/find/contactus)  
 (BP-07-10-14)

### myKeysight

myKeysight

[www.keysight.com/find/mykeysight](http://www.keysight.com/find/mykeysight)  
 A personalized view into the information most relevant to you.

### www.axiestandard.org



AdvancedTCA® Extensions for Instrumentation and Test (AXIe) is an open standard that extends the AdvancedTCA for general purpose and semiconductor test. Keysight is a founding member of the AXIe consortium. ATCA®, AdvancedTCA®, and the ATCA logo are registered US trademarks of the PCI Industrial Computer Manufacturers Group.

### www.lxistandard.org



LAN eXtensions for Instruments puts the power of Ethernet and the Web inside your test systems. Keysight is a founding member of the LXI consortium.

### www.pxisa.org



PCI eXtensions for Instrumentation (PXI) modular instrumentation delivers a rugged, PC-based high-performance measurement and automation system.

### Three-Year Warranty



[www.keysight.com/find/ThreeYearWarranty](http://www.keysight.com/find/ThreeYearWarranty)  
 Keysight's commitment to superior product quality and lower total cost of ownership. The only test and measurement company with three-year warranty standard on all instruments, worldwide.

### Keysight Assurance Plans



[www.keysight.com/find/AssurancePlans](http://www.keysight.com/find/AssurancePlans)  
 Up to five years of protection and no budgetary surprises to ensure your instruments are operating to specification so you can rely on accurate measurements.

### www.keysight.com/quality



Keysight Technologies, Inc.  
 DEKRA Certified ISO 9001:2008  
 Quality Management System

### Keysight Channel Partners

[www.keysight.com/find/channelpartners](http://www.keysight.com/find/channelpartners)  
 Get the best of both worlds: Keysight's measurement expertise and product breadth, combined with channel partner convenience.

[www.keysight.com/find/9000\\_CAN-LIN](http://www.keysight.com/find/9000_CAN-LIN)

